

# WorkTuff™

WORKTUFF™ IS DURABLE PROTECTION  
FROM FOUL WEATHER.

**NASCO**

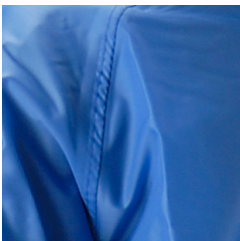


## NASCO WorkTuff™

WorkTuff™ is lightweight yet very rugged and durable. Designed for rough work environments, it will protect the worker from the abrasive nature of the job as well as extreme foul weather.

### Features & Benefits

- Waterproof - Provides resistance to water penetration
- Lightweight - Increases worker comfort
- Durable - Extends product life cycle
- Abrasion Resistant - Increases durability and reduces number of replacements
- Soft - Increases worker comfort
- Flexible - Maximizes worker range of motion
- Non-Conductive - Uses all non-metallic hardware



**QUALITY**  
Stitched and taped seams.



**PROTECTION**  
Storm Fly Front



## MATERIAL SPECIFICATIONS

<b>Fabric</b>	Type 66 Nylon
<b>Moisture Barrier</b>	Polyurethane
<b>Finished Weight</b>	4.5 oz/yd <sup>2</sup>
<b>Seam Construction</b>	2 needle stitched and taped
<b>Color(s)</b>	Yellow (Y), Forest Green (G), Electric Blue (EB)
<b>Hydro Resistance ASTM D751</b>	> 150 psi

## AVAILABLE ITEMS

### 601JG124

Green waist-length jacket, attached hood, hanger loop, snap front with storm fly, take up snaps at sleeve cuffs.

### 601TG126

Green bib style trouser, plain front, hanger loop, elastic suspenders with quick-release buckles, take up snaps at leg cuffs.

## RECOMMENDED APPLICATIONS

- Forestry
- Food Processing
- Fishing
- Park Services



**SPANISH YELLOW**



**GREEN**



**ELECTRIC BLUE**

Size chart available online at [www.nascoinc.com](http://www.nascoinc.com)

All NASCO raingear patterns are digitally mastered and cut ensuring you get the right size garment every time.

# NASCO

3 NE 21st Street  
Washington, IN 47501

**toll free** (800) 767-4288

**fax** (812) 254-6476

**email** [sales@nascoinc.com](mailto:sales@nascoinc.com)

**web site** [www.nascoinc.com](http://www.nascoinc.com)